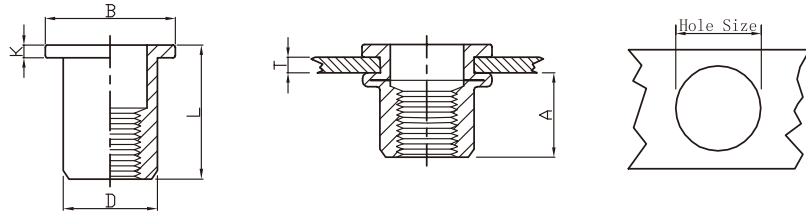


FH-RB Flat Head Round Body Plain

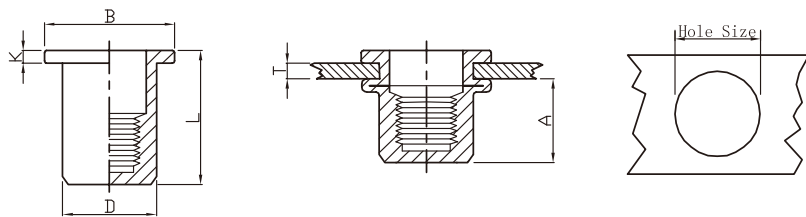


UNIT : mm

Thread	P/N	T(GRIP RANGE) Min Max	A Rer	Hole Size $+0.1$ 0	D $+0.07$ -0.1	B	K	L
M3	FH-RB-0315	0.5-1.5	4.7	5.0	4.9	7.2	0.8	8.5
	FH-RB-0325	1.5-2.5						9.5
M4	FH-RB-0420	0.5-2.0	6.0	6.0	5.9	8.5	0.8	10.5
	FH-RB-0435	2.0-3.5						12.0
M5	FH-RB-0525	0.5-2.5	7.5	7.0	6.9	10.0	1.0	13.0
	FH-RB-0550	2.5-5.0						17.0
M6	FH-RB-0630	0.5-3.0	9.2	9.0	8.9	12.3	1.3	15.5
	FH-RB-0655	3.0-5.5						18.0
M8	FH-RB-0835	0.5-3.5	11.5	11.0	10.9	15.0	1.5	18.5
	FH-RB-0860	3.5-6.0						21.0
M10	FH-RB-1025	0.5-2.5	11.5	13.0	12.9	16.3	1.5	17.0
	FH-RB-1040	2.5-4.0						21.0
M10	FH-RB-1060	4.0-6.0	12.5	13.0	12.9	17.0	1.6	24.0
	FH-RB-1035(12H)	1.0-3.5						11.0
M12	FH-RB-1240	1.0-4.0	13.5	15.0	14.9	18.0	1.7	22.0
	FH-RB-1265	4.0-6.5						25.0
M12	FH-RB-1240(16H)	1.0-4.0	16.0	16.0	15.9	22.0	2.0	25.0

M14, M16 Size is available.

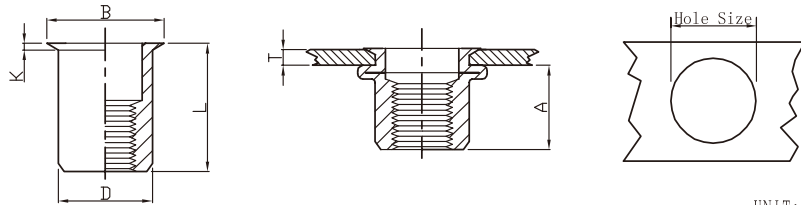
FH-RBC Flat Head Round Body Plain Close End



UNIT : mm

Thread	P/N	T(GRIP RANGE) Min Max	A Rer	Hole Size $+0.1$ 0	D $+0.07$ -0.1	B	K	L
M3	FH-RBC-0315	0.5-1.5	10.0	5.0	4.9	7.2	0.8	13.3
M4	FH-RBC-0420	0.5-2.0	11.3	6.0	5.9	9.0	0.8	16.0
	FH-RBC-0440	2.0-4.0						18.0
M5	FH-RBC-0525	0.5-2.5	11.5	7.0	6.9	10.0	1.0	17.0
	FH-RBC-0550	2.5-5.0						19.0
M6	FH-RBC-0630	0.5-3.0	12.7	9.0	8.9	12.3	1.3	19.2
	FH-RBC-0650	3.0-5.5						21.0
M8	FH-RBC-0830	0.5-3.0	14.8	11.0	10.9	15.0	1.5	21.5
	FH-RBC-0855	3.0-5.5						24.0
M10	FH-RBC-1040	1.0-4.0	19.2	13.0	12.9	17.0	1.6	27.0

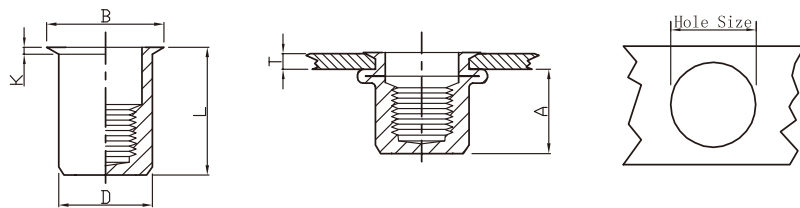
RH-RB Reduce Head Round Body Plain



UNIT: mm

Thread	P/N	T(GRIP RANGE)		A Rer	Hole Size $\begin{smallmatrix} +0.1 \\ 0 \end{smallmatrix}$	D $\begin{smallmatrix} +0.07 \\ -0.1 \end{smallmatrix}$	B	K	L
		Min	Max						
M3	RH-RB-0315	0.5	1.5	6.2	5.0	4.9	6.0	0.5	9.0
	RH-RB-0420	0.5	2.0	6.5	6.0	5.9	7.0	0.5	10.5
RH-RB-0440	2.0	4.0	13.0						
M5	RH-RB-0520	0.5	2.0	7.0	7.0	6.9	8.0	0.5	11.5
	RH-RB-0540	2.0	4.0						13.0
M6	RH-RB-0625	0.5	2.5	8.5	9.0	8.9	10.5	0.6	14.0
	RH-RB-0650	2.5	5.0				10.0	0.6	17.0
M8	RH-RB-0830	0.5	3.0	10.0	11.0	10.9	12.0	0.65	16.5
	RH-RB-0850	3.0	5.0						18.5
M10	RH-RB-1030	0.5	3.0	13.0	13.0	12.9	14.1	0.7	17.7
	RH-RB-1055	3.0	5.5						21.0
M10	RH-RB-1030(12H)	0.5	3.0	12.5	12.0	11.9	13.0	0.7	18.0

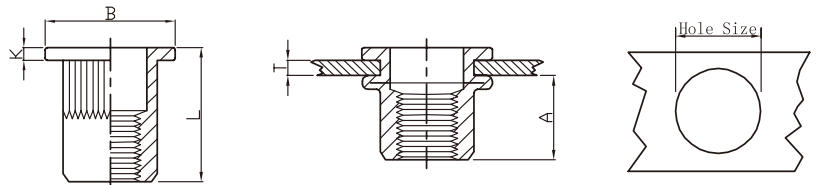
RH-RBC Reduce Head Round Body Plain Close End



UNIT: mm

Thread	P/N	T(GRIP RANGE)		A Rer	Hole Size $\begin{smallmatrix} +0.1 \\ 0 \end{smallmatrix}$	D $\begin{smallmatrix} +0.07 \\ -0.1 \end{smallmatrix}$	B	K	L
		Min	Max						
M4	RH-RBC-0420	0.5	2.0	11.0	6.0	5.9	7.0	0.5	15.0
	RH-RBC-0435	2.0	3.5						16.0
M5	RH-RBC-0520	0.5	2.0	12.5	7.0	6.9	8.0	0.5	16.5
	RH-RBC-0535	2.0	3.5						17.5
M6	RH-RBC-0625	0.5	2.5	15.5	9.0	8.9	10.0	0.6	20.5
	RH-RBC-0640	2.5	4.0						22.0
M8	RH-RBC-0830	0.5	3.0	17.0	11.0	10.9	12.0	0.65	23.0
	RH-RBC-0845	2.5	4.5						24.5
M10	RH-RBC-1030	1.0	3.0	18.2	13.0	12.9	14.1	0.7	24.5
	RH-RBC-1050	3.0	5.0						26.0

FH-KB Flat Head Knurled Body

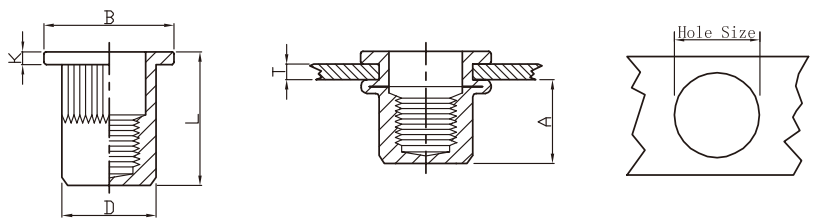


UNIT: mm

Thread	P/N	T(GRIP RANGE)		A Rer	Hole Size $+0.1$ 0	D $+0.07$ -0.1	B	K	L
		Min	Max						
M3	FH-KB-0315	0.5	1.5	6.0	5.0	4.9	8.0	0.8	10.0
M4	FH-KB-0420	0.5	2.0	6.0	6.0	5.9	9.0	0.8	10.5
	FH-KB-0435	2.0	3.5						
M5	FH-KB-0525	0.5	2.5	7.5	7.0	6.9	10.0	1.0	13.0
	FH-KB-0550	2.5	5.0	8.5					
M6	FH-KB-0630	0.5	3.0	9.2	9.0	8.9	12.30 (*13.0)	1.3	15.5
	FH-KB-0655	3.0	5.5	10.5					
M8	FH-KB-0835	1.0	3.5	11.5	11.0	10.9	14.5(*16.0)	1.5	18.5
	FH-KB-0860	3.5	6.0	11.5					
M10	FH-KB-1040	1.0	4.0	13.5	13.0	12.9	17.0(*19.0)	1.7	21.5
	FH-KB-1065	4.0	6.5	13.5					
M12	FH-KB-1240	1.0	4.0	13.5	15.0	14.9	18.0	1.7	22.0
	FH-KB-1265	4.0	6.5	14.0					
M10	FH-KB-1035(12H)	1.0	3.5	11.0	12.0	11.9	16.0	1.6	19.0
M12	FH-KB-1240(16H)	1.0	4.0	15.0	16.0	15.9	22.0	2.0	25.0
	FH-KB-1260(16H)	3.5	6.0	16.0					

Part are different series, if customer need this size, please mark.
All this part included serration or without serration under the flange.

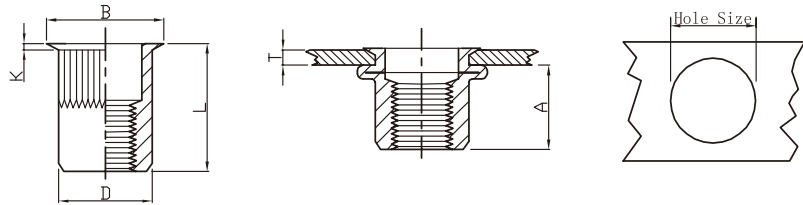
FH-KBC Flat Head Knurled Body Close End



UNIT: mm

Thread	P/N	T(GRIP RANGE)		A Rer	Hole Size $+0.1$ 0	D $+0.07$ -0.1	B	K	L
		Min	Max						
M4	FH-KBC-0420	0.5	2.0	11.3	6.0	5.9	9.0	0.8	16.0
	FH-KBC-0440	2.0	4.0						
M5	FH-KBC-0530	0.5	3.0	11.5	7.0	6.9	10.0	1.0	17.0
	FH-KBC-0550	2.5	5.0						
M6	FH-KBC-0630	0.5	3.0	12.7	9.0	8.9	12.3	1.3	19.2
	FH-KBC-0650	3.0	5.0						
M8	FH-KBC-0830	0.5	3.0	14.8	11.0	10.9	15.0	1.5	21.5
	FH-KBC-0855	3.0	5.5						
M10	FH-KBC-1040	1.0	4.0	19.2	13.0	12.9	17.0	1.6	27.0

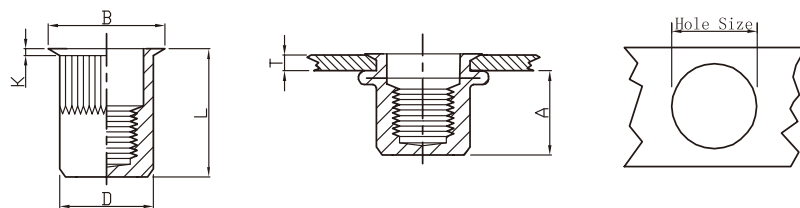
RH-KB Reduce Head Knurled Body



UNIT: mm

Thread	P/N	T(GRIP RANGE)		A Rer	Hole Size $+0.1$ 0	D $+0.07$ -0.1	B	K	L
		Min	Max						
M3	RH-KB-0320	0.5	2.0	6.2	5.0	4.9	6.0	0.5	9.0
	RH-KB-0420	0.5	2.0	7.0	6.0	5.9	7.0	0.5	11.2
M4	RH-KB-0440	2.0	4.0	7.0	6.0	5.9	7.0	0.5	13.0
	RH-KB-0520	0.5	2.0	7.0	7.0	6.9	8.0	0.5	11.5
M5	RH-KB-0540	2.0	4.0	7.0	7.0	6.9	8.0	0.5	13.0
	RH-KB-0625	0.5	2.5	8.5	9.0	8.9	10.0	0.6	14.0
M6	RH-KB-0650	2.5	5.0	8.5	9.0	8.9	10.0	0.6	16.0
	RH-KB-0830	0.5	3.0	10.0	11.0	10.9	12.0	0.65	16.5
M8	RH-KB-0850	3.0	5.0	10.0	11.0	10.9	12.0	0.65	18.5
	RH-KB-1035	1.0	3.5	12.5	13.0	12.9	14.0	0.7	19.5
M10	RH-KB-1060	3.5	6.0	12.5	13.0	12.9	14.0	0.7	22.0
	RH-KB-1035(12H)	1.0	3.5	12.5	12.0	11.9	13.0	0.7	19.5
M12	RH-KB-1240	1.0	4.0	16.2	16.0	15.9	17.6	0.75	24.2

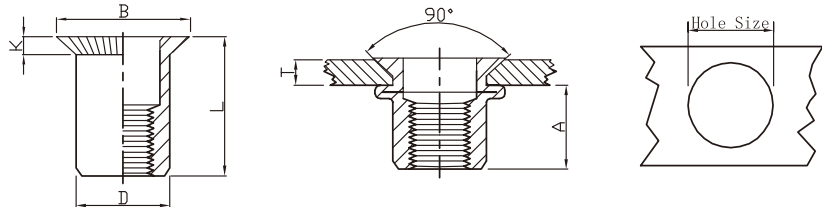
RH-KBC Reduce Head Knurled Body Close End



UNIT: mm

Thread	P/N	T(GRIP RANGE)		A Rer	Hole Size $+0.1$ 0	D $+0.07$ -0.1	B	K	L
		Min	Max						
M4	RH-KBC-0420	0.5	2.0	11.0	6.0	5.9	7.0	0.5	15.0
	RH-KBC-0435	2.0	3.5	11.0	6.0	5.9	7.0	0.5	16.5
M5	RH-KBC-0520	0.5	2.0	12.5	7.0	6.9	8.0	0.5	16.5
	RH-KBC-0535	2.0	3.5	12.5	7.0	6.9	8.0	0.5	18.0
M6	RH-KBC-0630	0.5	3.0	15.5	9.0	8.9	10.0	0.6	20.5
	RH-KBC-0645	3.0	4.5	15.5	9.0	8.9	10.0	0.6	22.0
M8	RH-KBC-0830	0.5	3.0	17.0	11.0	10.9	12.0	0.65	23.0
	RH-KBC-0845	3.0	4.5	17.0	11.0	10.9	12.0	0.65	24.5
M10	RH-KBC-1030	1.0	3.0	18.2	13.0	12.9	14.0	0.7	24.5
	RH-KBC-1050	3.0	5.0	18.2	13.0	12.9	14.0	0.7	26.0

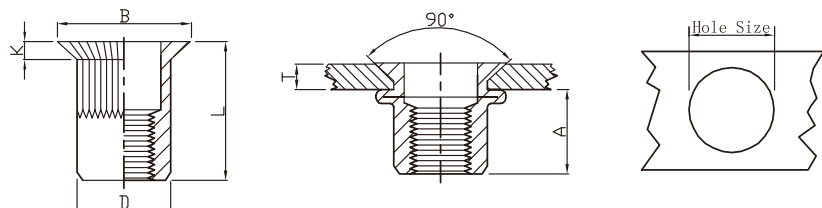
CH-RB Countersunk Head Round Body Plain



UNIT: mm

Thread	P/N	T(GRIP RANGE)		A Rer	Hole Size $+0.1$ 0	D $+0.07$ -0.1	B	K	L
		Min	Max						
M4	CH-RB-0430	1.5	3.0	6.5	6.0	5.9	9.0	1.5	12.0
M5	CH-RB-0535	1.5	3.5	7.5	7.0	6.9	10.0	1.5	13.0
M6	CH-RB-0640	1.5	4.0	9.0	9.0	8.9	12.0	1.5	15.5
M8	CH-RB-0845	2.0	4.5	11.0	11.0	10.9	14.0	1.5	18.5
M10	CH-RB-1050	2.0	5.0	13.0	13.0	12.9	16.0	1.5	21.0

CH-KB Countersunk Head Knurled Body



UNIT: mm

Thread	P/N	T(GRIP RANGE)		A Rer	Hole Size $+0.1$ 0	D $+0.07$ -0.1	B	K	L
		Min	Max						
M4	CH-KB-0430	1.5	3.0	6.5	6.0	5.9	9.0	1.5	12.0
M5	CH-KB-0535	1.5	3.5	7.5	7.0	6.9	10.0	1.5	13.0
M6	CH-KB-0640	1.5	4.0	9.0	9.0	8.9	12.0	1.5	15.5
M8	CH-KB-0845	2.0	4.5	11.0	11.0	10.9	14.0	1.5	18.5
M10	CH-KB-1050	2.0	5.0	13.0	13.0	12.9	16.0	1.5	21.0
M12	CH-KB-1250(16H)	2.0	5.0	16.5	16.0	15.9	19.0	1.5	24.0